

4



3



2011.001.0113



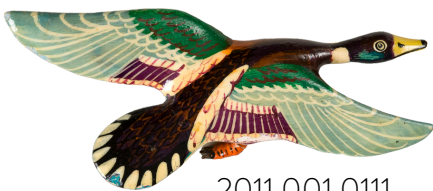
2011.001.0112



2011.001.0098



2011.001.0093



2011.001.0111



**BOBBY L. ROBERTS  
LIBRARY OF  
ARKANSAS  
HISTORY & ART**

# Coloring Book of Bird Pins

**From the Rosalie Santine Gould - Mabel Rose  
Jamison Vogel Collection**

**RobertsLibrary.org**

View How To Video  
by scanning the QR code.





## Bird Pins

from Rohwer and Jerome

After the bombing of Pearl Harbor in 1941, more than 120,000 Japanese Americans were forcibly removed from their homes in California, Oregon, Washington, and Hawaii and sent to ten incarceration camps throughout the country. Two of those camps were located at Rohwer and Jerome, Arkansas.

Between 1942 and 1945, more than 16,000 Japanese Americans were held in the two War Relocation Authority Centers in southeastern Arkansas. During their incarceration, inmates young and old created works of art to document their experiences.

Bird pins, like these from the Gould/Vogel Collection at the CALS Butler Center for Arkansas Studies, are one example.

