

THE BUTLER BANNER

NEWSLETTER OF THE RICHARD C. BUTLER, SR. CENTER FOR ARKANSAS STUDIES

Volume 5, Number 3

Fall 2002

Showcase Arkansas to Highlight Artists & Authors

On Friday, November 1st, the Central Arkansas Library System will host "Showcase Arkansas," a benefit for the Butler Center. Showcase Arkansas is an evening of food, fun, and bidding on Arkansas books and art.

Over 150 special books by Arkansas authors and 35 pieces of art will be up for grabs in the silent auction. The evening of celebration will be held in the Cox Creative Center across the parking lot from the Main Library in the Rivermarket area of downtown Little Rock.

According to Dr. Bobby Roberts, director of the Central Arkansas Library System, "Showcase Arkansas is much more than a fundraiser; it is an opportunity to celebrate the creative spirit of Arkansans." Roberts notes that "Arkansas is fortunate to have so many outstanding artists and writers."

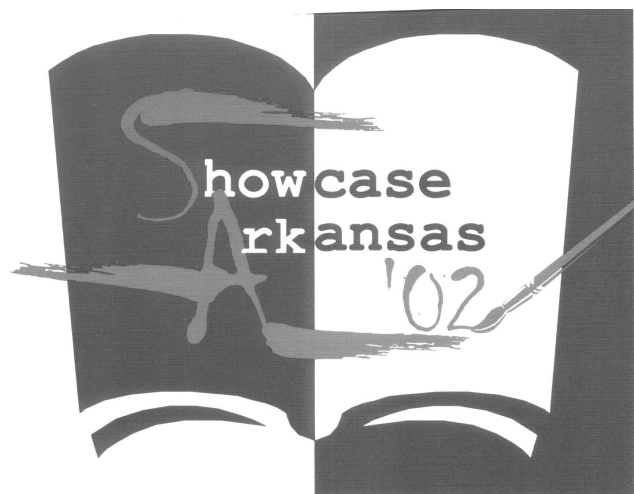
Among the books in the auction are a wide range of both fiction and nonfiction. Available novels include a signed edition of the out-of-print *The Dog of the South* by Little Rock resident Charles Portis. Another treasure is the book *To Take a Dare* by Crescent Dragonwagon and Paul Zindel. Bidders will have a chance at two books by the famed Little Rock activist and writer Adolphine Fletcher Terry. Among the many more available titles is a very good copy (with dustjacket) of the 1941 WPA *Guide to Arkansas*.

Several media are found in the works of art to be auctioned, including an exquisite piece of art glass by James Hays. Many other artists are represented, including Betty Ruth McMath, J. O. Buckley, Kevin Kresse, Annette Kagy, Selma Blackburn, and Jean Mross.

The artwork may be viewed during the period October 28-31, 9:00 am to 5:00 pm on the second and third

floors of the Cox Creative Center.

Admission to Showcase Arkansas is \$25 per person, or \$40 per couple. For information on ordering tickets, contact Cary Cox at 501-918-3949. All proceeds from Showcase Arkansas will go to benefit the Butler Center.

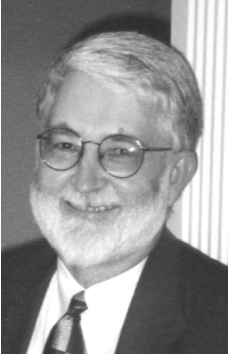


Happy 5th Birthday
Butler Center!!!



Inside This Issue

Curator's Column	Page 2
Butler Center Welcomes New Employee	Page 3
Arkansas Art News	Page 4
Endowment Created to Save Internet Items	Page 5
Volunteers Sought; Needed	Page 6
Creation Science Program a Success	Page 6
Showcase Arkansas Gallery Exhibit Schedule Released	Page 6
Butler Center Usage Sets Record	Page 7
Elsie Whitson is Model Volunteer	Page 7
Memorials & Gifts	Page 8



Curator's Column

Tom W. Dillard

This month, October, marks the 5th year of the Butler Center. Five years ago we sent out invitations to a party—at which the Richard C. Butler Center for Arkansas Studies was announced as a newly created department of the Central Arkansas Library System.

We started out with a staff of three, too few to keep the doors open, so we borrowed folks from other departments. Today, with a staff of nine, we offer services in a wide variety of areas, including on-site research in first-rate collections, programming of a varied nature, publication of an interesting quarterly journal, and so much more!

Nothing excites me more than our work in the schools. Our wonderful and much missed namesake, Dick Butler, had a special interest in our efforts to invigorate Arkansas history in the classrooms. In five years we have worked very hard to develop lesson plans on Arkansas topics. We

now offer a total of 75 lesson plans—which are made available to teachers on the Library's website <www.cals.lib.ar.us>. Our goal is to generate 300 plans, at which time we want to publish them in both print and digital forms.

How does one go about developing good, sound lesson plans on Arkansas history? We first did a search for existing plans, but that yielded only a handful of really good ones. Next, we began offering Butler Fellowships to outstanding teachers, with the requirement that each Fellow contribute to our cache of plans.

We have undertaken two joint ventures with outside agencies to increase the number of lesson plans in certain areas. The Bessie B. Moore Center for Economic Education at the University of Arkansas in Fayetteville and the Arkansas Council for Economic Education worked with us to generate ten lessons on various economic history topics. With the Arkansas Natural Heritage Commission, an agency in the Department of Arkansas Heritage, we generated 30 plans dealing with the state's "natural divisions."

In case you are not a teacher and do not know just exactly what is a lesson plan, let me mention one of my favorites: "'Hard Times Come Again No More'—Letters from Arkansas Families in the Great Depression." From this lesson, students will discover the depression's impacts on specific families. That lesson plan was written by Butler Fellow George West, teacher at the Arkansas Math and Science School in Hot Springs. His plan, which is targeted for students in grades 7-12, provides a rich vari-

ety of classroom activities and strategies, as well as making use of actual letters written to Governor Harvey Parnell.

Sherry Tipps, a Butler Fellow and teacher in the Conway Public Schools, prepared a plan titled "Salt of the Earth: A Caddo Industry in Arkansas," which should cast interesting light on the unique natural resources of Arkansas' Gulf Coastal Plain.

We still face a challenge in generating lesson plans specifically designed to meet the learning needs of children in kindergarten through fourth grade. However, Rebecca Pugh, a Butler Fellow and teacher in the Lincoln Public Schools, has written a picture book on Arkansas geography which we hope will fascinate, entertain, and educate even the youngest kindergartners!

Ms. Velma B. Woody, a retired teacher from Stone County, has been commissioned to write a collection of short stories based on Arkansas history. This book will provide interesting auxiliary reading for students at the junior high school level.

On the topic of Arkansas history education, we are guided by the belief that Arkansas history can *become the most exciting and educationally broadening subject in the social studies curriculum.*

You can join us in our efforts to improve Arkansas history education. Call or write me if you want to help.



The *Butler Banner* is the quarterly newsletter of the Richard C. Butler Center for Arkansas Studies. Central Arkansas Library System
100 Rock Street
Little Rock, AR 72201
(501) 918-3056
(501) 375-7451-FAX
arkinfo@cals.lib.ar.us
<http://www.cals.lib.ar.us>
Printed and distributed with private funds.
Timothy G. Nutt, Editor



Butler Center Welcomes New Employee

The Butler Center is proud to welcome a new employee to our staff. Jennifer Udey is the new administrative assistant. A native of Fayetteville, Jennifer earned a B.A. degree in Art History from the University of Arkansas, where she studied under famed novelist and art historian Donald Harington. She will be assisting Curator Tom Dillard and Deputy Curator Tim Nutt in their daily work duties. Jennifer will also assist in programming planning as well as documenting the Butler Center's Arkansas art collection.

Jennifer enjoys quilting, cooking, viewing art exhibits, and hiking with her dog, Owen.

Please join us in welcoming Jennifer to the staff!



Jennifer is still smiling after her first day on the job.

Arkansas Artist Gallery Celebrates Anniversary

The Butler Center's friends at the Arkansas Artists Gallery, located on the second floor of the Cox Creative Center, will host a 1-year Anniversary/Holiday Celebration on Saturday, October 26 from 10:00 am until 3:00 pm.

The Arkansas Artists Gallery is operated by the Corps d'Art, a cooperative of 24 Arkansas artists, and features ever-changing exhibits of works for sale.

Mark your calendars for October 26 and help support local artists. Refreshments will be served, admission is free, and artists will be present.

For more information, contact the Arkansas Artists Gallery at 376-1979.

New Photo Acquisition Shows Enterprising Students



**Enterprise School, Johnson County, 1909.
Donated by Jim McDaniel**



Arkansas Art News

Reita Walker Miller
Arkansas Art Coordinator

Bruce Anderson was a well known architect in Arkansas and in 1970 he was one of the founding members of the Mid-Southern Watercolorists Society in Little Rock. Three of his watercolor paintings were purchased for our collection at auction from the Villa Marre house this past summer. *U.S. Arsenal at MacArthur Park* now hangs in the administrative office at the Main Library, the *Zeb Ward House* hangs in Butler Center Curator Tom Dillard's office, and the *John Reigler Cottage* is hanging in the 3rd floor corridor at Main. *Cypress Trees at Bearskin Lake*, another of Anderson's work, was already in our collection.

Other new pieces have been added to our growing collection of work by Arkansas artists and artisans thanks to these generous donors:

Jean W. and Fred Schmutz -- *The Terry Mansion*, watercolor painting by Polly Loibner.

Archie Moore-- two watercolor paintings by Isabel Weathersby and Helen Mosby.

Susan and Tom Schallhorn-- *Offering*, ceramic sculpture, by Helen Phillips.

Lucette and Dr. Harold White--oil painting on masonite, by Edwin Brewer.

Freddie and Rev. Vic Nixon--100 year old quilt, original political cartoon by George Fisher, painted cardboard sculpture by a death row inmate, large plaster medallion plaque of President Bill Clinton.

Susan Pfeifer--drawing by folk artist, Jerry W. Coker, ceramic vessel by Mary Lu Kosmeder, ceramic flask by Rosemary Fisher.

Gertrude Remmel Butler--1870 oil

painting of *The Thompson Girls* (previously hung at the Villa Marre and the Ada Thompson Home for Elderly Women.) The painting is hanging in the Butler Center Research Room.

The Library has long been dependent on donors to supplement the growth and enhancement of our art collection. Now that we also have the added expenses of an exhibition schedule in our new Showcase Arkansas Gallery, it is even more true.

Over two-thirds of the art department's budget this year was spent on conservation matting and framing of Louis and Elsie Freunds' donated work for the exhibit, *Arkansas Treasures: Louis and Elsie Freund*. Almost two thousand visitors have been able to view this outstanding body of work during the August 1 – September 28 exhibition. Through the gallery we are now able to "tell the story" of Arkansas artists not only to those within our state, but to countless visitors from out of state who had no idea of the quality and depth of Arkansas artists' work.

So, as you see, you can help us continue to tell the cultural story of Arkansas whether you donate art or donate funds to preserve and exhibit the art. Thanks to all of you who support our mission to collect, preserve, and exhibit the cultural history of Arkansas.

A schedule of upcoming art exhibits in the Showcase Arkansas Gallery may be found on page 6 in this issue of the *Banner*.



Historic Portrait Donated to Butler Center



Gertie Butler stands beside the painting of the Thompson Girls she recently donated to the Butler Center. The painting features Ada Thompson Crutchfield (center) and her sister, Willie Thompson Norfleet (left) and a cousin Leah Thompson Rose. The painter is unknown, but family lore says he was so taken with the young girls' beauty, he requested the parents' permission to paint them.

After Ada Thompson Crutchfield's untimely death in 1904, a home for indigent elderly women was established in her memory. The rules of the Home are displayed to the right of the painting, while Gertie holds the Home's dinner bell.



Endowment Established to Purchase Internet Items

Since the advent of auction sites on the Internet, vast numbers of Arkansas historical documents have been sold—all too often to out-of-state collectors and universities. Tom Dillard, Butler Center Curator, said his agency is very concerned about the situation. He said: “Remnants of Arkansas’ precious historical legacy—everything from letters and diaries to Civil War pictures—are ending up in the hands of dealers and private institutions. We just don’t have the money to compete with such well-endowed organizations as the Yale University Library or the Huntington Library in California.”



In an attempt to bring the situation under control, the Butler Center made a proposal to the Friends of the Central Arkansas Library System to create an endowment which could be used to purchase important Arkansas items on Internet auction sites. The Friends agreed, and their board voted to establish an endowment goal of \$100,000, with only the income being spent. The Friends also voted to make an initial contribution of \$10,000.

The new endowment is known as P.A.R.T.—“Protect Arkansas’ Resources & Treasures.” It will be administered by the Friends to benefit the Butler Center.

Tom Dillard urged all Arkansans to “do your P.A.R.T.” to help save Arkansas history. All contributions to P.A.R.T. are totally tax-deductible.

Dillard concluded: “It broke my heart recently when a Chicago dealer outbid us for an original Civil War order signed by General Thomas Hindman just prior to the Battle of Prairie Grove.” The Butler Center wants to put a stop to the hemorrhage of historical documents on the Internet.

Use the form to the right to make your contribution to the P.A.R.T. fund. “Do your P.A.R.T.”

PART ENDOWMENT FUND

Yes! I want to DO MY PART to help the Central Arkansas Library System purchase rare Arkansas items for the library’s historical Arkansas collection.

Enclosed is my contribution of:

\$ _____

Method of Payment:

☐ Check

☐ Cash

For your records, your gift is deductible under 170 (C) (1) of the Internal Revenue Code of 1986.

Make check payable to: CALS Endowment for PART.

☐ Mr. ☐ Mrs. ☐ Ms. ☐ Mr. and Mrs.

Print Name _____

Address _____

City, State, Zip _____

Phone _____

This gift is in: ☐ Memory of: ☐ Celebration of:

Please send acknowledgement of this gift to:

Print Name _____

Address _____

City, State, Zip _____

Thank you for contributing to the PART Endowment Fund! Your gift will be acknowledged in an issue of the Friends of Central Arkansas Libraries’ newsletter, the *FOCAL Point*.

Please send this form along with your contribution to:

**FOCAL Director
Central Arkansas Library System
100 Rock St.
Little Rock, AR 72201**

For more information on the PART Endowment Fund, call (501) 918-3033 or e-mail susans@cals.lib.ar.us

New Column on Arkansas Penned by Butler Center Curator

Tom W. Dillard, Butler Center Curator, recently began writing a weekly Arkansas history column in the *Arkansas Democrat-Gazette*. Entitled “Remembering Arkansas,” the column appears on the Book Pages of the Sunday edition.

Dillard said he views the column as an extension of his duties as Butler Center Curator. “My mission is to share Arkansas history with the people of the state,” Dillard says, adding “the story of Arkansas should be told in all the media.”

In the six weeks the column has run, stories have dealt with the flood of 1927, a prehistoric canoe, pearl harvesting, the Quapaw Indian Saracen, and a vegetarian commune in antebellum Benton County.

Volunteer Recruitment Underway

The Butler Center for Arkansas Studies is searching for volunteers to work in our genealogy department and to help with our manuscript collections. Has genealogy been your favorite past-time or would you like to sharpen your research skills by helping others? Would you like to touch actual Arkansas documents and help preserve our state's history? Come one, two, three, or five days a week. You set your own schedule.



I WANT YOU

Butler Center Curator Tom Dillard said, "Volunteers are crucial to achieving the Butler Center's mission. We already have three wonderful volunteers, Geri Chandler, Peg Smith, and Elsie Whitson, but we want to encourage everyone to volunteer a day a week. In an effort to attract more volunteers we have begun 'Operation: Volunteer Recruitment'. Through this program we hope to recruit volunteers to help us provide reference service to our genealogy patrons as well as process our manuscript collections."

If you would like to volunteer, contact Tom at 918-3054. Remember, there is no volunteering without "u".

Creation Science Readers Theater Program a Success

The readers theater program held September 25 commemorating the 20th anniversary of the trial determining the constitutionality of the 1981 Creation-Science Law was a success. Nearly 200 people attended the event to learn about the landmark event.

The program began with Dr. Cal Ledbetter, professor emeritus of political science at UALR, presenting an overview of the anti-evolution impulse throughout Arkansas' history followed by a readers theater presentation of the trial. The script for the presentation was researched and written by Shirley Schuette, a UALR Honors Program Graduate.

The Butler Center sponsors programs such as the Creation Science Readers Theater yearly, but it is our volunteers who make them successful.

SHOWCASE ARKANSAS GALLERY SCHEDULE

(THROUGH JANUARY 18, 2003)

Regular Hours:

Monday - Friday
9:00 am - 5:00 pm
Saturday
9:00 am - 4:00 pm
Sunday
CLOSED

October 3 – 26

Central Arkansas Library System
Staff Artists and Artisans Exhibit

Includes oil and watercolor painting, pottery, photography, jewelry and much more!

Most work will be for sale and will solely benefit the artist.

October 28 – 31

Preview of artwork available in the Showcase Arkansas Silent Auction Fundraiser (November 1st)

Arkansas artists have donated work which includes: oil and watercolor paintings, pottery, art glass, jewelry and photography. A few of the artists are: J.O. Buckley, Beverly McLarty, Kevin Kressee, James Hayes, Cindy Nahlen, Betty Dortch McMath and many others.

Come early and get an idea of what you'll want to bid on!

November 11 – January 18

Clinton Presidential Library Preview

Exhibit: *Holidays in the White House*

A variety of trees, decorations and holiday items that were used in the White House will be displayed, as well as a 1000 pound glass tree by Dale Chihuly. Several holiday items from other Presidential libraries will also be included in the exhibit.

Extended hours for this exhibit are:

Monday, 9:00 am - 5:00 pm
Wednesday, 9:00 am - 5:00 pm
Friday, 9:00 am - 5:00 pm
Thursday, 9:00 am - 7:00 pm
Saturday, 9:00 am - 5:00 pm
Sunday, 1:00 - 4:00 pm

Butler Center's Use Sets New Record

The number of materials used by Butler Center patrons for the month of August 2002 skyrocketed, resulting in the highest number in our five year history.

The total number of materials used by patrons was 4000. The previous record was the month before in July 2002 when over 3400 materials were used.

Usage of the Butler Center has steadily increased since our opening in September 1997. Tom W. Dillard, Butler Center Curator, attributes the usage increase to an enlarged materials budget and new acquisitions. "With endowments from supporters like Dolores Bruce and continuing support from Gertie Butler and library director Bobby Roberts," the Butler Center can only get better," says Dillard. He predicts materials usage will double in the next few years.

Be Like Elsie!

The Butler Center has a wonderful group of supporters. One person in that group is Elsie Whitson. Elsie volunteers every Tuesday and arrives promptly at 9:00 am and stays until 4:00 pm. She is a whiz at typing and has helped out tremendously since she has started volunteering.

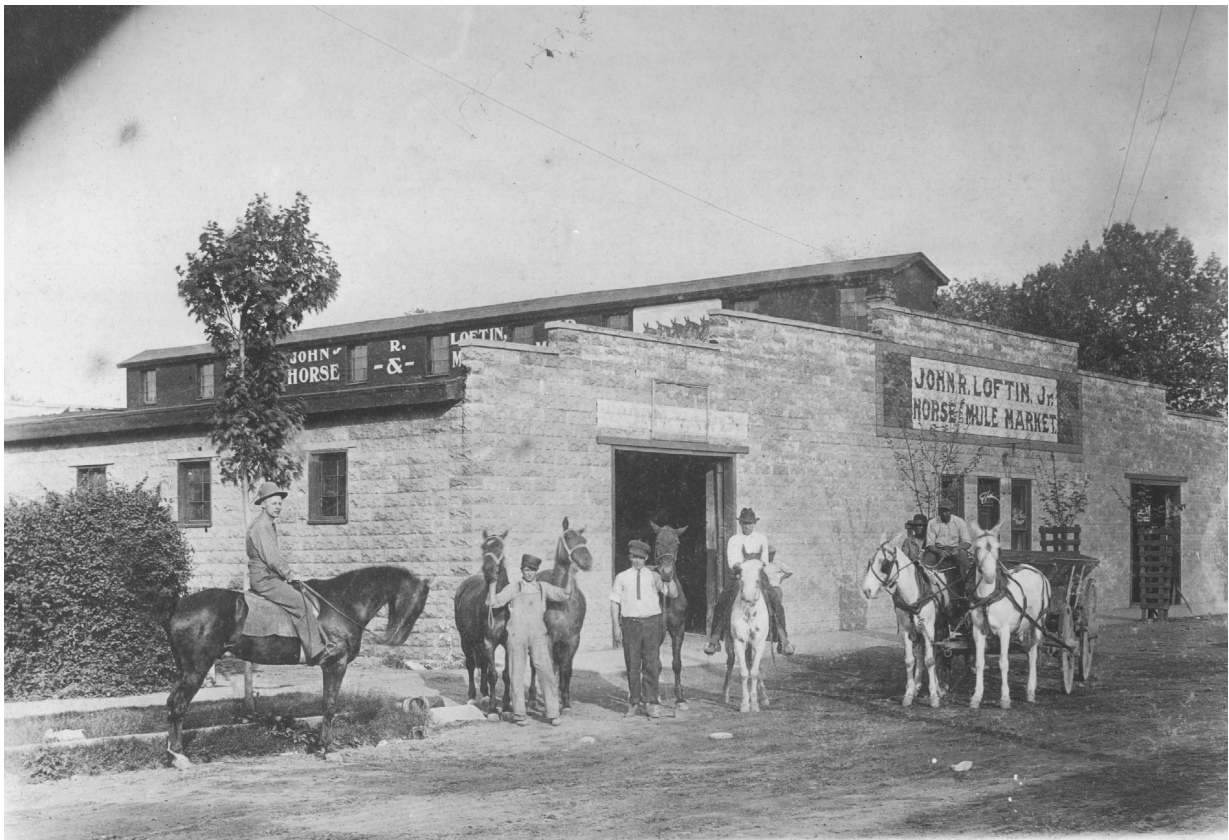
Elsie is a native Arkansan, born in Van Buren County. She is the mother of three children (one each in New Jersey, Florida and Wisconsin) and has four grandchildren.

Although volunteering for the Butler Center is Elsie's most fun hobby, she does enjoy others. She has a strong interest in genealogy and has been researching both her's and her husband's family lines for about twenty years. Elsie also enjoys reading and cooking, as well as gardening. However, since she lives on a rocky hillside Elsie does not do much of the latter.

The Butler Center is pleased to have Elsie with us every Tuesday. Geri Chandler and Peg Smith are two of our other faithful volunteers. You too, could have as much as fun as Elsie, Geri, and Peg. All you have to do is call Tom Dillard and say, "I want to be like Elsie, Geri and Peg. Sign me up!"



New Acquisition Shows Equines to Be Marketable



John R. Loftin, Jr. Horse and Mule Market, Nashville (Howard County), ca1910.

In Memory Of

Thelma Martineau
Magna Charta Dames & Barons
Arkansas Division

Tom Harding
Peyton & Betty Brewer Rice

Dr. Howard Stern
Mary Delia Prather

General Support

Gertrude R. Butler
Little Rock, Arkansas

Mary Frances Hodges
Little Rock, Arkansas

Joe & Susan Purvis
Little Rock, Arkansas

Books and Materials

Peggy Ackerman
Little Rock, Arkansas

Eleanor Adams
Little Rock, Arkansas

Evalena Berry
Little Rock, Arkansas

Rev. Don Campbell
Little Rock, Arkansas

**Arkansas Children's
Hospital**
Little Rock, Arkansas

Laurel Boeckman
Columbia, Missouri

Henry S. de Linde
Mabelvale, Arkansas

David Elms
Little Rock, Arkansas

Carol Eruren
North Little Rock, Arkansas

James L. Hassell, Jr.
Richmond, Virginia

Richard B. Homard
Little Rock, Arkansas

Pat James
Batesville, Arkansas

Cliff Kennedy
Penryn, California

Rita Littrell
Fayetteville, Arkansas

Dr. Judith L. Logan
Portland, Oregon

Jeanne McDaniel
Little Rock, Arkansas

Jim McDaniel
Dallas, Texas

Linda McDowell
Little Rock, Arkansas

Archie Moore
Little Rock, Arkansas

Barbara L. Mulkey
Little Rock, Arkansas

Freddie Nixon
Little Rock, Arkansas

Howard L. Norton
Little Rock, Arkansas

Ken Parker
Little Rock, Arkansas

Ron Robinson
Little Rock, Arkansas

Peg Smith
Little Rock, Arkansas

**Southeast Missouri
State University**
Cape Girardeau, Missouri

Marguerite Spaeth
Mason, Texas

**Underhill Society
of America**
Oyster Bay, New York

Susan Page Veal
Arkansas State Society
Daughters of the American
Revolution
Hot Springs, Arkansas

**Waymon G.
Villines**
Ponca, Arkansas

Dr. Bill Weldon
Fredericksburg, Texas

Louise Zimmerman
North Little Rock, Arkansas



**Butler Center for Arkansas Studies
Central Arkansas Library System
100 Rock Street
Little Rock, AR 72201**

PRE-SORTED
STANDARD
U.S. POSTAGE
PAID
LITTLE ROCK, AR
PERMIT NO. 183